

‘AAA-intro.ly’

Introduction

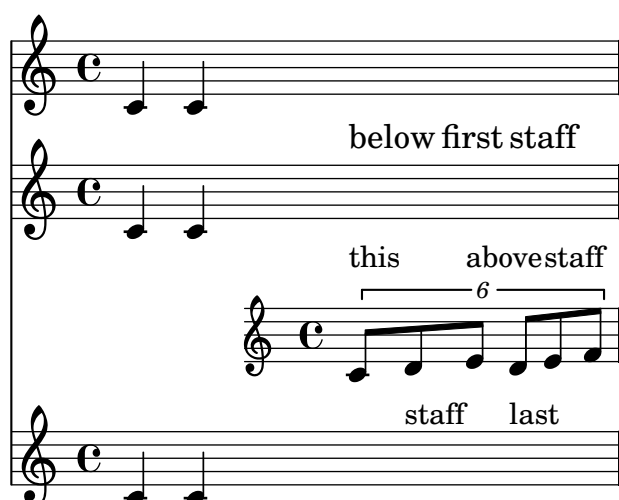
This document shows examples from the [LilyPond Snippet Repository](#).

In the web version of this document, you can click on the file name or figure for each example to see the corresponding input file.

This document is for LilyPond version 2.11.28

‘alignment-order.ly’

This snippet shows of to use the `alignBelowContext` and `alignAboveContext` properties, which may be needed for text elements (e.g. lyrics) positioning, but also for musical contents such as ossias.

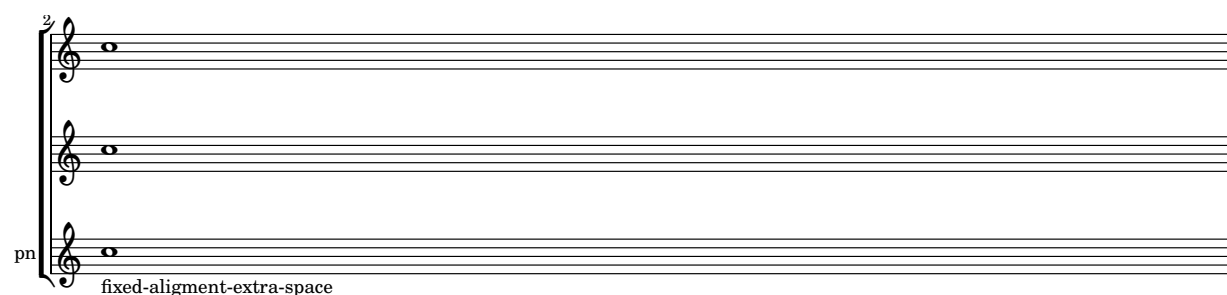


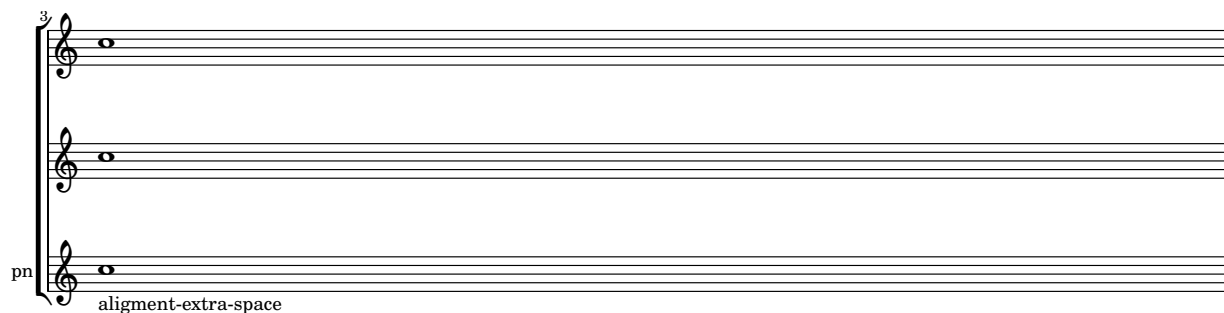
‘alignment-vertical-spacing.ly’

By setting properties in `NonMusicalPaperColumn`, vertical spacing of alignments can be adjusted per system.

By setting `alignment-extra-space` or `fixed-alignment-extra-space` an individual system may be stretched vertically.

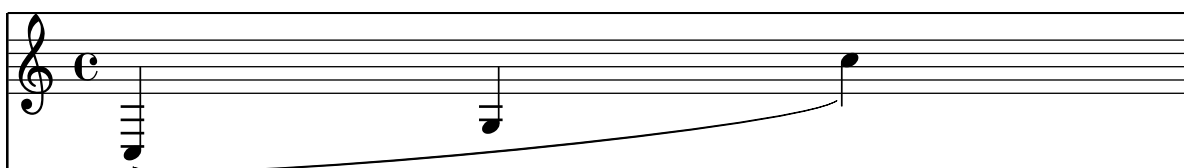
For technical reasons, `\overrideProperty` has to be used for setting properties on individual objects. `\override` in a `\context` block may still be used for global overrides.





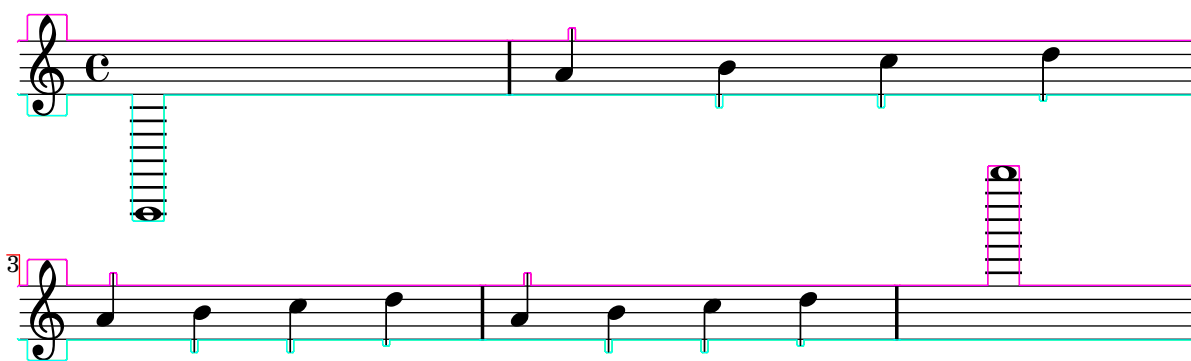
`'displaying-the-exact-extent-of-a-system.ly'`

If you want to see exactly what amount of space takes your system, you can display it by overriding the `#'stencil` property in the `System` context: as you can see here, the system size is determined by including every postscript element such as slurs or key symbol.



`'drawing-skyline-outline.ly'`

By setting the Scheme property `'debug-skylines`, you can turn your score into a nice funky artwork :-) More seriously, drawing this skyline can be helpful to debug spacing and collision issues. (Still, it does make your score pretty; so just try it, no matter how much you really need to...)



‘page-label.ly’

Page labels may be placed inside music or at top-level, and referred to in markups.

Title Page

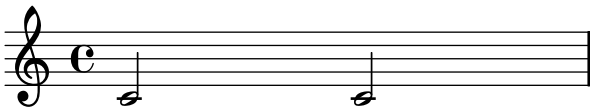
2

Table of contents

Table of contents	2
First Score	3
Mark A	3
Mark B	4
Mark C	4
Unknown label	?

3

First score



A (page 3)



4



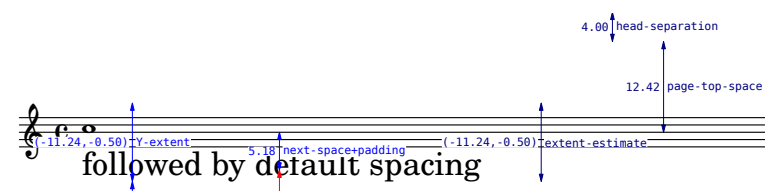
Music engraving by LilyPond 2.11.28—www.lilypond.org

`'page-spacing.ly'`

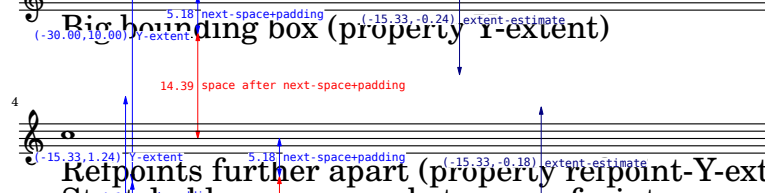
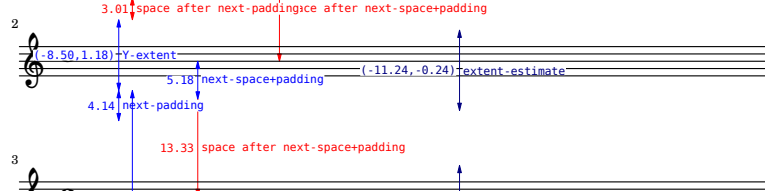
By setting properties in `NonMusicalPaperColumn`, vertical spacing of page layout can be adjusted.

For technical reasons, `overrideProperty` has to be used for setting properties on individual objects. `\override` may still be used for global overrides.

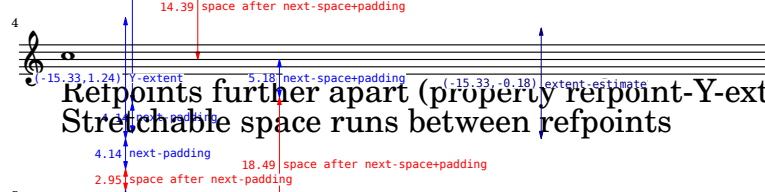
By setting `annotate-spacing`, we can see the effect of each property.



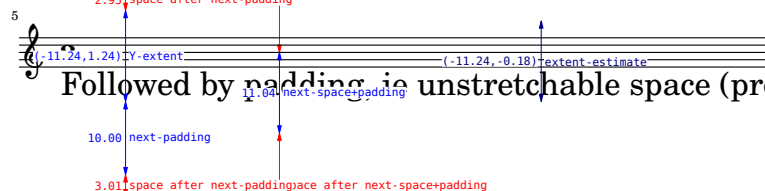
followed by default spacing



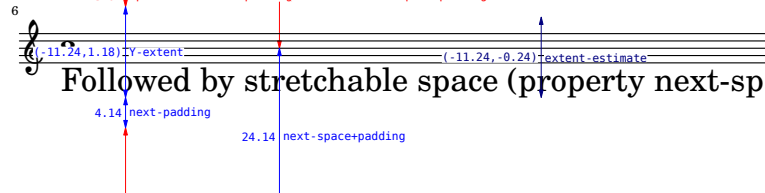
Big bounding box (property r-extent)



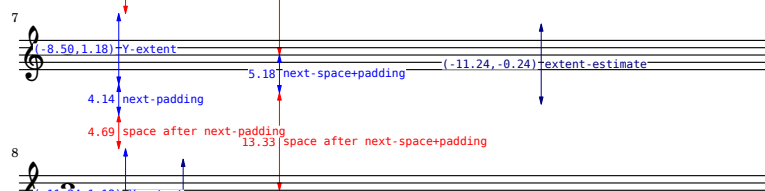
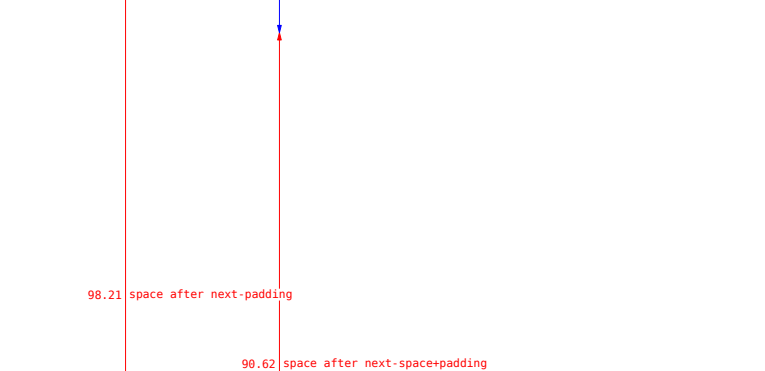
Repoints further apart (property repoint-Y-extent).
Stretchable space runs between reprints



Followed by padding, ie unstretchable space (property next-padding).



Followed by stretchable space (property next-space)



25 staff space to the bottom of the page (property bottom-space).

307.29 paper-height

25.00 bottom-space left

`‘proportional-spacing.ly’`

Proportional notation can be created by setting `proportionalNotationDuration`. Notes will be spaced proportional to the distance for the given duration.



`‘proportional-strict-grace-notes.ly’`

With `strict-note-spacing` spacing for grace notes (even multiple ones) is floating as well.



`‘proportional-strict-notespacing.ly’`

If `strict-note-spacing` is set spacing of notes is not influenced by bars or clefs part way along the system. Rather, they are put just before the note that occurs at the same time. This may cause collisions.



`‘setting-the-extent-of-objects.ly’`

The object may be extended to larger sized by overriding their properties. The lyrics in this example have an extent of $(-10,10)$, which is why they are spaced so widely.

foo - - bar baz